

Century 21 *Jr.*

Input Technologies &
Computer Applications

KEYBOARDING

Review Ch. 17 – Creating Online Pages and Sites

© 2010, 2006 South-Western, Cengage Learning

Web Browsers

- Software programs that allow users to find and view web pages
- Web browsers interpret HTML and XML to display web pages
- Popular browsers: Firefox, Safari, Internet Explorer
- Original browsers: Mosaic, Netscape



File Extensions

- Three- or four-letter code that identifies a particular file type
 - .docx = Word
 - .xlsx = Excel
 - .pptx = Powerpoint
- Web pages must be saved with a **.htm** or **.html** file extension

HTML Tags

- Control the display of content on a web page
- Enclosed in angle brackets `<>`
- Open HTML tags start commands
 - `<P>`
- Close HTML tags end commands
 - `</P>`
- Most tags are used in pairs (open and close)

Basic Formatting Tags

Tag	Action
<code><P> </P></code> or <code><P></code>	Leaves a blank line and begins a new paragraph (like tapping the ENTER key twice)
<code>
 </BR></code> or <code>
</code>	Begins a new line (like tapping the ENTER key once in <i>Word</i>); does not always need a pair
<code><TITLE> </TITLE></code>	Places a title for a web page in the title bar of the web browser

Headings and Bulleted Lists

Tag	Action
<CENTER> </CENTER>	Centers text and graphics on a web page
<H1> </H1> <H2> </H2> <H3> </H3> <H6> </H6>	Is used to create headings in documents; makes text larger or smaller depending on the number used
<HR>	Creates a horizontal line, also called a horizontal rule; is used alone, not as part of a pair
 	Begins a bulleted (unordered) list Marks the beginning and end of each item in a bulleted list
	Ends a bulleted (unordered) list
 	Applies bold to text

Hyperlinks

- Created with an anchor tag

- ` `

- Hyperlink example:

```
<A HREF="http://www.nasa.gov/">Link to NASA</A>
```

- Hypertext reference is inserted between “ ”
 - Reference is anchored to the text between the tags
 - Clicking that text on the web page takes you to the linked page

Color Tags

- Three parts:
 - The tag itself
 - An attribute
 - A characteristic you want the tag to have
 - Background color
 - Text color
 - Visited link color
 - Link color
 - A value
 - A number or word assigned to an attribute
 - For example, #FF0000 or RED

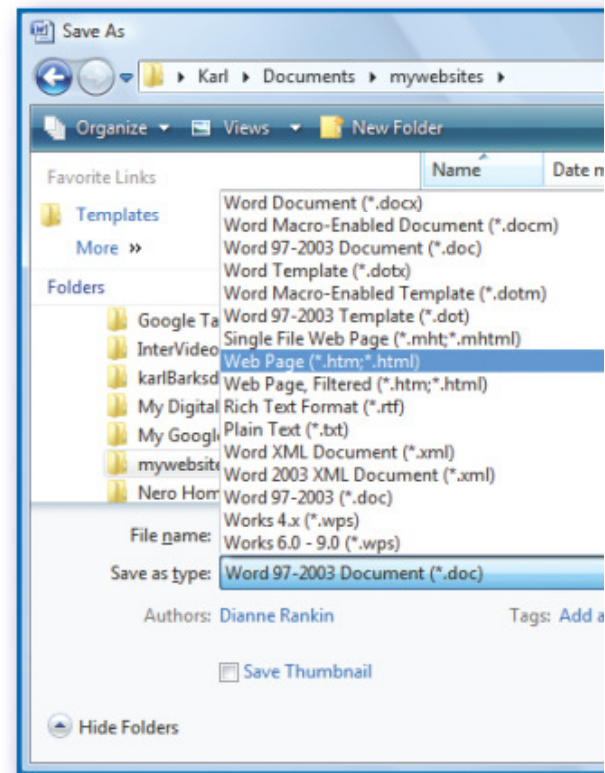
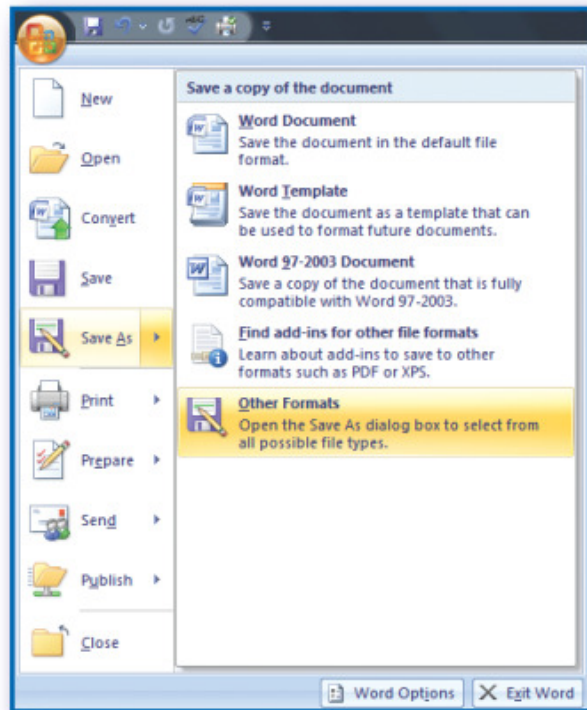
Image Tags

Tag or Attribute	Action
<code></code>	Displays an image on a web page
<code>WIDTH="number"</code>	Attribute that defines how many pixels wide a picture will be
<code>HEIGHT="number"</code>	Attribute that defines how many pixels high a picture will be

- For example:
``
- Add a hyperlink to the image:
``
``
``

Create a Web Page

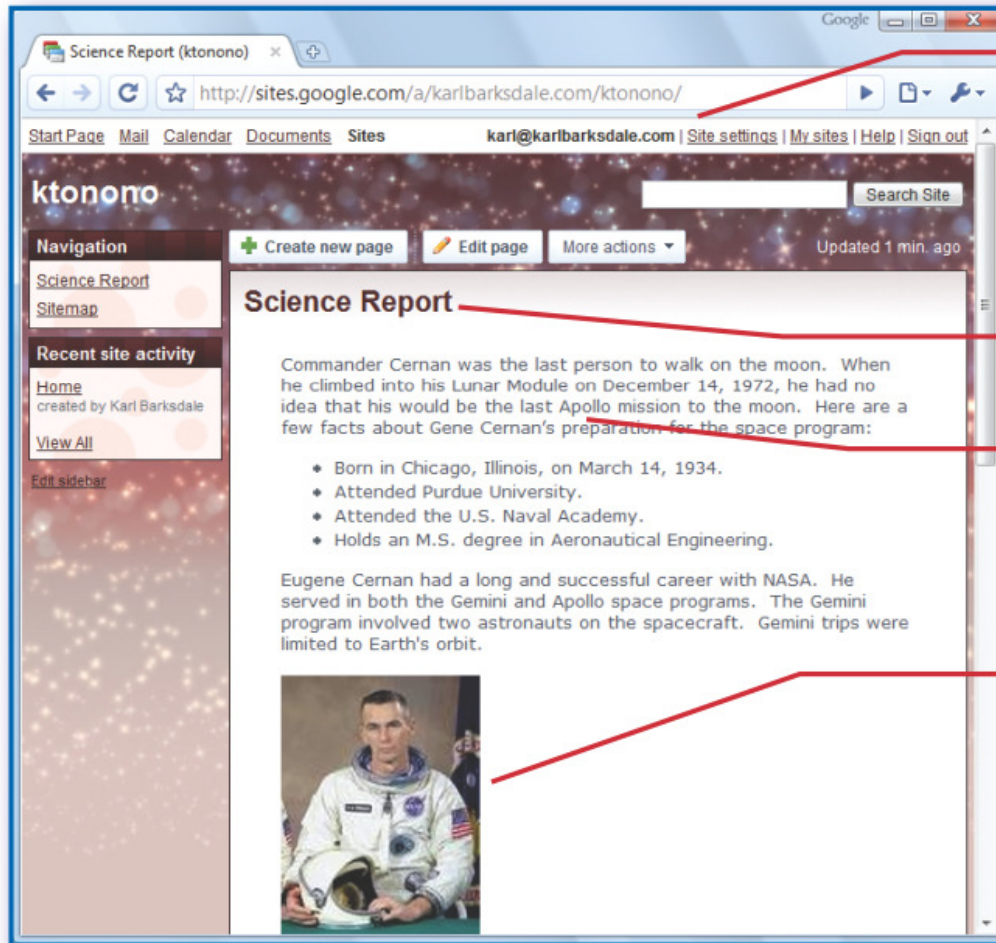
- Save As a web page in *Word*, *Excel*, or *Powerpoint*



Other Web Creation Programs

- WYSIWYG (“What You See Is What You Get”) programs
 - Google Sites
 - Adobe Dreamweaver
 - Adobe GoLive
 - Microsoft Expression Web
 - Formerly Microsoft FrontPage
 - Microsoft Word

Add Content



Click Site Settings to change your theme.

Enter the title.

Enter your article.

Insert images.

Review Question

1. Which of the following is not a web browser?
 - a. Google Sites
 - b. Safari
 - c. Firefox
 - d. Mosaic

Read the question and decide which answer you think is correct. Click the mouse to see the correct answer.

ANSWER

1. Which of the following is not a web browser?

a. Google Sites

b. Safari

c. Firefox

d. Mosaic

Review Question

2. HTML tags

- a. Often come in pairs
- b. Are enclosed in angle brackets
- c. Control the display of content on a web page
- d. Are used to open and close sentences

Read the question and decide which answer you think is correct. Click the mouse to see the correct answer.

ANSWER

2. HTML tags

- a. Often come in pairs
- b. Are enclosed in angle brackets
- c. Control the display of content on a web page
- d. Are used to open and close sentences

Review Question

3. Which of the following tags creates a list?
- a.

 - b. <BL>
 - c.
 - d. <HR>

Read the question and decide which answer you think is correct. Click the mouse to see the correct answer.

ANSWER

3. Which of the following tags creates a list?

a.

b. <BL>

c.

d. <HR>

Review Question

4. <A HREF> is used to
- a. Create hyperlinks
 - b. Attach images
 - c. End a list
 - d. Create document headings

Read the question and decide which answer you think is correct. Click the mouse to see the correct answer.

ANSWER

4. <A HREF> is used to

- a. Create hyperlinks
- b. Attach images
- c. End a list
- d. Create document headings

Review Question

5. Color tags have
- a. A value limit
 - b. An attribute and a color
 - c. An attribute and a value
 - d. A color and a limit

Read the question and decide which answer you think is correct. Click the mouse to see the correct answer.

ANSWER

5. Color tags have
- a. A value limit
 - b. An attribute and a color
 - c. An attribute and a value
 - d. A color and a limit